

CELEBRATING

17 YEARS!

# 2024 DESIGNER SHOWHOUSE denver life

Colorado's leading lifestyle magazine



NOVEMBER 2024

PLEASE DISPLAY UNTIL 12.05.2024 \$4.95



7 25274 23793 7

denverlifemagazine.com

■ **Step inside this year's Designer Showhouse in Bonnie Brae,** showcasing the work of 14 talented design teams. Discover stunning Colorado-sourced materials, bold artistic touches, and timeless craftsmanship. From elegant living spaces to custom details, this home redefines luxury and creativity.



600



# DREAM WORK

BY STEPHANIE WILSON  
PHOTOGRAPHY BY SUSIE BRENNER  
STYLING BY MOLLY VALIN

## NEIGHBORHOOD

**CHARM** This striking home in the heart of Bonnie Brae seamlessly blends modernist principles with contemporary luxury.

Tucked into the iconic Bonnie Brae neighborhood, the 2024 *Denver Life Magazine* Designer Showhouse, presented by Thermador, stands as a masterful intersection of modernism and luxury living—a testament to innovative design and collaborative craftsmanship. Conceived by Brian Martin and Kevin Sietmann of Affect Architecture and brought to life by Caliber Construction, the speculative home showcases modernist principles infused with contemporary flair.

Set on an expansive 9,200-square-foot corner lot—a rarity in this established enclave—the 5,816-square-foot home commands attention with its clean lines, flat roofs, and expansive windows. “It’s rare to find a corner lot with such a commanding presence on both sides,” says architect Brian Martin. The unique orientation offers a refreshing perspective, allowing the design to both honor and elevate the neighborhood’s aesthetic.



 denver life  
**designer**  
SHOWHOUSE 2024



Get your tickets today:  
[denverlifemagazine.com/showhouse](https://denverlifemagazine.com/showhouse)

Join *Denver Life Magazine* as we unveil the 2024 Designer Showhouse, presented by Thermador—a stunning collaboration of 14 local design teams, showcasing the latest in innovative home design and decor. Don't miss your chance to tour this exceptional space from Nov. 1-3, 2024, between 10 a.m. and 2 p.m. A \$40 donation per adult (\$15 for guests under 20) to The Morgan Adams Foundation grants you exclusive access, with the home's address shared upon confirmation of your contribution.

Your ticket supports a powerful cause—100% of proceeds will benefit The Morgan Adams Foundation's work advancing cutting-edge pediatric cancer research and therapies. Together, we can help improve survival rates and lessen the harmful effects of treatments on children battling cancer.

Since its inception, the Designer Showhouse has raised over \$450,000 for Denver nonprofits. Be part of this year's impact and experience design with purpose.

**BUILDER**

Caliber | Brad Liber

**ARCHITECT**

Affect Architecture  
Brian Martin, Kevin  
Sietmann

**LEAD DESIGNER**

Caliber | Caylin Engle

“The highly graded variant lot challenged the design team to come up with something breathtaking and functional,” says Brad Liber, principal of the Caliber Construction. “Our goal was to craft a beautiful modern addition to the neighborhood, respecting historical architectural cues while introducing modern elements that enhance the local streetscape.”

The home’s architecture emphasizes simplicity and minimalism—a hallmark of modernist design, which values form and function over ornamentation. The straight, sharp lines and flat roofs contribute to a streamlined silhouette, while large windows maximize natural light and create a strong connection between interior and exterior spaces. This seamless integration is reminiscent of the International style. These abundant windows not only flood the interior with natural light but also bring the outside in, dissolving the boundaries between the home and its natural surroundings, allowing residents to feel as though they’re living both within the house and among the towering old-growth trees.

Inside, the collaborative efforts of 14 design teams have transformed the five-bedroom residence into an elegant exhibition of fine furnishings, art, and design. Led by Caliber’s lead designer Caylin Engle, their efforts are unified under a single “organic modern” vision, creating a seamless flow throughout the five-bedroom residence. Each team added their own touches, but the home’s cohesive aesthetic ensures a natural continuity between spaces.

Natural wood elements, warm textures, and striking accents like black and gold fixtures and bold tile selections define the interior spaces. “Each room has a little something that will stand out in your mind as you walk through the house,” Engle says. Unifying elements such as the continuation of exterior brick into the living and dining rooms and an abundance of large windows create a cohesive aesthetic that blurs the lines between indoors and out.

The main level features a welcoming living room with access to a sprawling patio—perfect for embracing Colorado’s indoor-outdoor lifestyle—and a main-level office that offers a quiet retreat. The kitchen, envisioned as a culinary showpiece, boasts a large island, custom cabinetry by Tharp Custom Cabinetry, and elegant backsplash details. “The cabinetry design complements the home’s aesthetic by using clean lines and lighter neutral finishes,” says Gil O’Connor of Tharp Custom Cabinetry. “We wanted to bring a sense of warmth and calm through the use of natural color tones and textures.” Rift Sawn White Oak in a whitewash finish lends a natural elegance, while innovative features like a large island with seating, a wood range hood flanked by floating shelves, and integrated wood-paneled appliances elevate the space.

Upstairs, four bedrooms—including a luxurious primary suite—and a bonus loft space offer private sanctuaries. The primary suite is envisioned as a serene haven, strategically placed among the large old-growth evergreens for privacy and views. “We placed the primary suite up in the trees to create a sense of tranquility,” says Liber.

The home doesn’t shy away from innovative features. A designated fitness space caters to wellness enthusiasts, while a walk-out basement flooded with natural light provides additional living space. The rare three-car garage with a privately enclosed driveway—unheard of in this neighborhood—adds functional luxury. “It’s about creating spaces that are not only beautiful but also enhance everyday living,” says Engle.

Lighting throughout the home, curated by Fusion Light and Design, plays a pivotal role in highlighting architectural details and enhancing the overall aesthetic. “Lighting is the jewelry of your design,” says Stephanie Brunette, lighting designer with Fusion Light

and Design. “We chose black finishes to create contrast and incorporated materials like marble and fixtures with movement to bring natural aspects into the home.”

The 2024 *Denver Life Magazine* Designer Showhouse is more than just a display of architectural prowess; it’s a collaborative effort that supports a greater cause. Partnering with The Morgan Adams Foundation, the project aims to make a meaningful impact in the community by supporting pediatric cancer research.

“The house is one of a kind and has to be walked through to truly understand how special it is,” says Engle. “Each room has a little something that will stand out as you explore.”

Located in close proximity to Washington Park and Cherry Creek North, the home embodies the best of Denver living—melding modern design, functional luxury, and community spirit. It’s an invitation to experience a new standard of contemporary elegance in one of the city’s most beloved neighborhoods.

“This property is not just a dwelling but a bold expression of design, poised to become a distinguished example of modern residential architecture,” says Liber. “It undoubtedly sets a benchmark for design excellence.”



# Living Room

■ **KIM LAYNE INTERIORS**  
kimlayneinteriors.com

■ **DESIGNERS**  
Kim Layne, Angela West, Sydney Coy

■ At Kim Layne Interiors, each project is driven by the individuality of the client. With a talent for blending styles, the team takes pride in not having a signature aesthetic, opting instead to let the personality of the space—and those who will live in it—guide their design choices. For the living room of the 2024 *Denver Life Magazine* Designer Showhouse, they've crafted a sophisticated, comfortable room that connects beautifully to both the home's interior and exterior.

Inspired by the natural red hues of the brick fireplace, the design team wove a warm, earth-toned palette throughout the room. They create interest through layers of various textures and finding big statement pieces as focal points. The result is a welcoming, visually interesting space that invites conversation while blending the indoor with out.

## How did you incorporate the builder's aesthetic into the living room?

We drew inspiration from the natural tones of the red brick fireplace to influence the color palette and accents. It helped create a cohesive look that ties into the rest of the home.

## Why did you select this space to design?

The living room is such an important gathering space in a home, and we wanted to create a room that's really inviting to anchor the surrounding areas. We also loved the amount of light from the floor-to-ceiling doors and windows.

## How did you ensure the living room is both beautiful and functional?

As much as we love beautiful things, a solid space plan is essential. By positioning a sofa and a lounge chair to face each other, we enhanced the room's flow, ensuring a balance between aesthetic appeal and functionality. This arrangement also connects the surrounding spaces, both indoor and out, for a seamless experience.

## Any design tricks of the trade to share?

Don't be afraid to mix materials and textures. Sticking to one style can make a space feel flat.

## What inspired your furniture selection and placement?

We chose pieces in warm earth tones and mixed textures to reflect the natural surroundings.



**NATURAL BEAUTY** Renowned portrait artist Ed Fairburn combines the geography of facial features with the geography of the earth in the artworks from Abend Gallery that hang on the wall behind the Cassis III sofa from HW Home.

The furniture placement was designed to create a flow that encourages movement between the kitchen, dining room, and outdoor areas, while also fostering a cozy, linger-worthy atmosphere.

## DETAILS ABOUT THIS DESIGNER



# Piano Lounge

■ **TRUDESIGN**  
truedesigncolorado.com

■ **DESIGNERS**  
Cynthia Stafford, Lindi Bolinger

■ TruDesign embraced the music room as a showcase of elegance and practicality, capitalizing on its full glazing at both the front and back that bathes the area in natural light. Recognizing the room as the heart of social gatherings, the

designers aimed to create a space that welcomes guests and sets the tone for the entire home. With the piano as the focal point, this intimate area invites guests to linger, creating a welcoming environment for gatherings. Soft hues and a

nature-inspired wallpaper unify the living and dining areas, blending the room's airy ambiance with the home's overall harmony. The space is a serene celebration of music, conversation, and effortless hosting.

## What's a key element that makes the music room unique?

The wallpaper serves as a unifying element, connecting the living and dining areas while imparting

a sense of harmony and tranquility by tying in the simple beauty of nature.

## Any design tricks of the trade to share?

Using large, dramatic artwork on the fireplace—which doesn't have a mantel—creates a focal point in the room while adding visual interest to an otherwise underutilized area. It makes a statement that elevates the overall design aesthetic.

## What in the music room reflects your signature?

The artful drama throughout. The area rug plays a pivotal role, anchoring the room with its striking presence. Despite the overall neutrality of the room, we embrace a play of contrasts, juxtaposing deep, rich tones with light, natural hues to create dynamic impact. This interplay of colors and textures adds depth and dimension, capturing the essence of our design aesthetic and making a bold statement that's both captivating and timeless.

## What inspired your furniture selection and placement?

We were driven by a desire for fluidity. We selected pieces with elegant curves and organic lines, emphasizing an inherent sense of movement. By highlighting the curved shapes of the furniture, we aimed to create a visual rhythm. Each piece is positioned to maximize the natural flow of the space, so the room feels calm, cohesive, and inviting.



DETAILS ABOUT THIS  
DESIGNER







**NATURAL CONNECTION** The buttercream tones of Papier's Nostalgia wallpaper from Walltawk ground the space and create a seamless connection to the dining room.



## Kitchen, Pantry & Breakfast Nook

■ **c2DESIGN**  
c2designinteriors.com

■ **DESIGNERS**  
Corinne Ekle, Courtney Meredith, Annie Knighton

flat-panel cabinetry, the design team selected a creamy quartz countertop with subtle warm veining to enhance the warmth and elegance of the space. The inclusion of floating shelves flanking the hood adds an opportunity to showcase beautiful dishes and decorative items, infusing personality into the kitchen's clean lines.

The breakfast nook features a round table paired with linen barrel chairs, creating a cozy spot that encourages flow between the kitchen, dining room, living room, and backyard. In the pantry, a subtle wallcovering introduces color and pattern to the angular space, anchored by a textured Roman shade. It's a "party pantry" that not only provides ample storage but also serves as an extension of the kitchen's design, proving that utility spaces can be both practical and visually appealing.

### What's a key element that makes your space unique?

We are excited about the pantry wallcovering—York Wallcovering's La Broderie wall-

■ In the heart of the home, c2Design has transformed the kitchen, breakfast nook, and pantry into spaces that are both aesthetically stunning and highly functional. Embracing the builder's choice of gorgeous natural oak



paper. It brings a subtle amount of color and pattern to the angular pantry space, and we anchored it with a textured Roman shade. Why shouldn't your food and small appliances have a pretty place to live too?

### What trends in kitchen design do you especially love?

We love the trend toward more minimal kitchens. This means clearing countertops of small appliances and creating a "working pantry" like we did here—an extension of the



kitchen for storing blenders, toasters, and coffee machines, keeping the main kitchen streamlined. There's still shelving for canned goods and other pantry items, but even those are being organized and styled in aesthetically pleasing ways.

**How did you ensure your space is both beautiful and functional?**

We chose a gorgeous quartz product that looks like natural stone, featuring light and warm veining—perfect for a kitchen space. Quartz is durable and resistant to

scratching, chipping, and staining from acidic substances. It's non-porous, easy to clean, and doesn't harbor harmful bacteria. Its longevity means it doesn't need to be replaced as often as other materials, reducing its environmental impact.

**Any design tricks of the trade to share?**

Adding art to floating shelves, even in a kitchen, adds personality and depth to a space filled with hard finishes.

**DETAILS ABOUT THIS DESIGNER**



## Dining Room & Wet Bar

■ **LUSI DESIGN**  
lusidesigndenver.com

■ **DESIGNER**  
Courtney Wells

■ Courtney Wells of LuSi Design transformed the dining room into a tranquil, nature-inspired gathering space that seamlessly blends natural elements with modern design. At the heart of the room is a rustic wood slab dining table, its organic texture and durability making it both a striking focal point and a practical choice for everyday use. The table embodies the balance of warmth and contempo-

rary appeal that defines Wells' approach to design.

One wall features a captivating wallpaper mural depicting a serene natural landscape, adding depth and tranquility while expanding the perceived size of the room. This nature-inspired element transforms the mood of the entire space, enhancing its ambiance by connecting it with the outdoors. In contrast, the sleek and modern cabinetry of the wet bar in-

troduces a sophisticated touch, offering a blend of textures and styles that feels cohesive and inviting.

■ **Why did you select this space to design?**

I chose the dining room and wet bar with the vision of creating a welcoming gathering space that integrates natural elements into its ambiance.

■ **What's a key element that makes your space unique?**

The wood slab dining table from HW Home serves as the centerpiece, anchoring the room with its natural beauty. Its organic texture invites guests to gather and linger, while its durability ensures it stands the test of time.

■ **How did you go about selecting accessories?**

I focused on cohesive colors, textures, and themes that enhance the room's overall ambiance while adding both functional and aesthetic value to each area.

■ **What dining room design trends are you especially loving right now?**

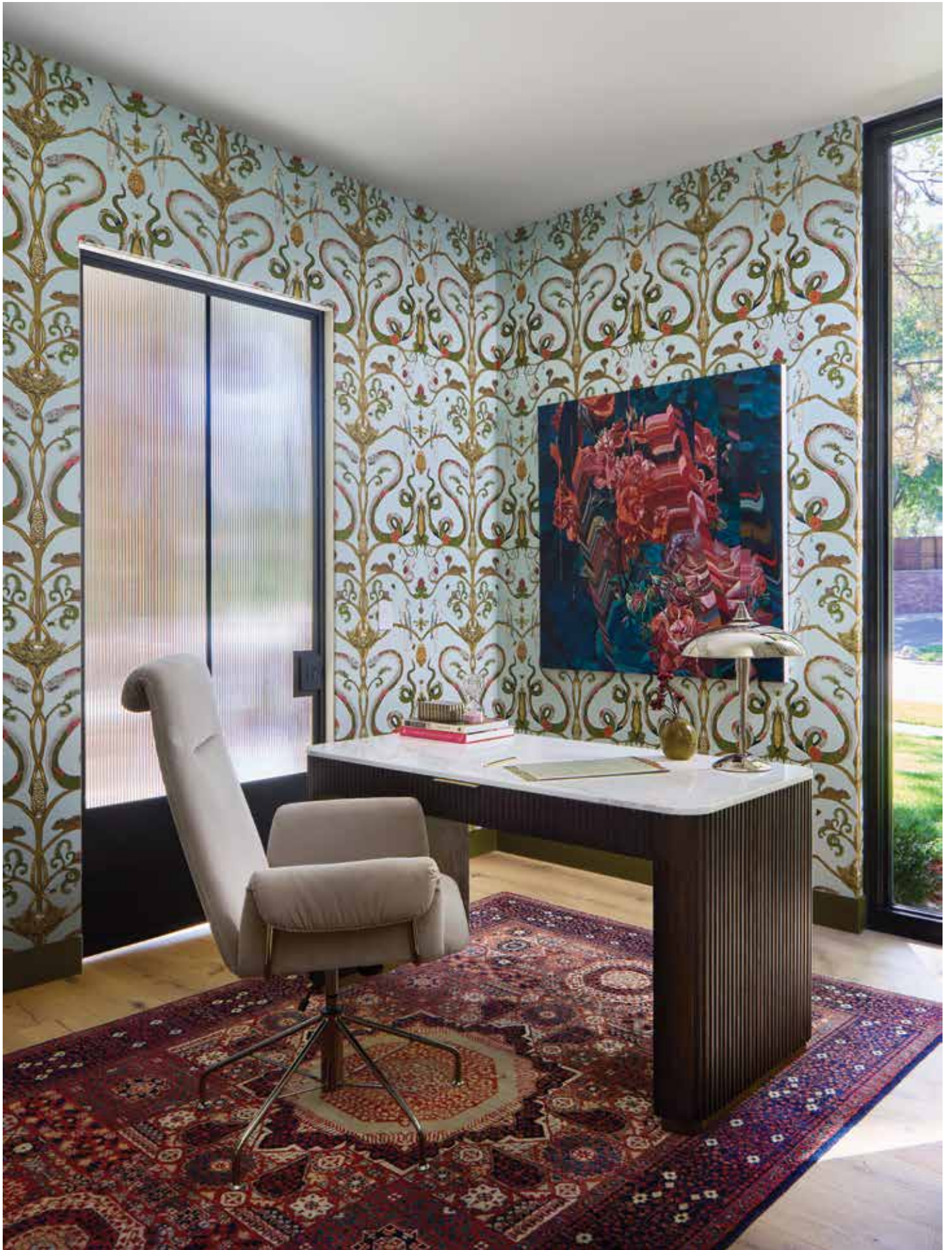
I'm excited by the shift toward more casual and multifunctional dining spaces, incorporating natural materials like wood and stone, and embracing sustainable, eco-friendly decor. There's also a trend toward creating personalized, experiential dining environments that reflect individual tastes and lifestyles.

DETAILS ABOUT THIS  
DESIGNER



**SPIRITED ENCLAVE** Tucked between the kitchen, living room, and dining room, this sleek wet bar features VintageView's W Series matte black 18-bottle wine racks to showcase Carboy Winery's finest selection.





## Office

■ **ATELIER INTERIOR DESIGN**  
atelierid.com

■ **DESIGNER**  
Katie Schroder

■ Atelier Interior Design's signature boldness shines through in the home office of the 2024 *Denver Life Magazine* Designer Showhouse. Known for her eclectic use of color, pattern, and texture, Schroder infused this space with vibrant energy while maintaining functionality.

The office, often a place for personal expression, was the perfect canvas for her firm's global and cultural inspirations, resulting in a dynamic workspace that balances serious productivity with playful design.

The showstopper of the room is undoubtedly

the quirky botanical wallpaper, Snake Party 2.0 by Merenda Wallpaper, adding layers of visual interest and setting a playful tone. To enhance functionality without sacrificing aesthetics, highly stylish built-in shelving provides ample storage while serving as a design feature. By incorporating a chaise lounge into the room's L-shape, Atelier transformed the office into a dual-purpose area—perfect for both working and unwinding.

### **Why did you select this space to design?**

We thought it would be a good space to have some fun. Even though it is more of a serious space, people tend to be a bit more adventurous and unique with the design of their home office. It's where personal style really shines.

### **What's a key element that makes your space unique?**

The wallpaper is the showstopper in this space. It's botanical and quirky, and it adds so much visual interest.

### **What inspired your furniture selection and placement?**

We took advantage of the odd L-shape of the room and put a chaise lounge next to the shelving, so the space doubles as a home office and a reading nook. We wanted to go soft and neutral with the furniture while also bringing in style with the rounded edges and interesting textures. We also sourced vintage lighting to give the space a smart, unique vibe.

### **Any design tricks of the trade to share?**

When using wallpaper in a space, pull a fun color from it to coordinate with the paint, like we did with the paint color for the built-in shelving. And don't be afraid to hang art on top of wallpaper—the layers make it more interesting and well-styled.



**BOLD MOVES** The striking hand-drawn pattern in Merenda's Snake Party 2.0 wallpaper sets a vibrant, playful tone for Atelier's office, infusing the space with creative energy.

DETAILS ABOUT THIS  
DESIGNER



**JEWEL BOX**

Moody tile and a deep paint color extend to the ceiling, creating a space that feels both intimate and expansive.



## Powder Bath

■ **RED CHAIR DESIGNS**  
redchairdesigns.com

■ **DESIGNER**  
Roxann Lloyd

walls, which continue seamlessly onto the ceiling, create a bold, immersive experience. This technique gives the space a moody, jewel-box feel, turning a small bathroom into a striking and memorable highlight of the home.

With a floating vanity that runs the full length of the room, the powder bath feels spacious without sacrificing storage. The sleek, high-contrast palette between the walls and the countertop adds a modern, sophisticated touch, making this small space both functional and visually striking.

■ The powder bath offers a bold departure from the light-filled expansiveness of the rest of the home. A full wall of vertical tile draws the eye upward, enhancing the sleek lines of the architecture. The room's dark

**Why did you select this space to design?**

Powder bathrooms can be fun rooms that don't need to follow the style of the rest of the house as closely. They can be more dramatic than other rooms. Designers often refer to fun powder rooms as "jewel boxes" because colors and patterns that would be too much in a large space are very impactful in these rooms.

**How did you ensure the powder bath is both beautiful and functional?**

It's sleek and simple with high contrast between the walls and vanity. It's easy to clean and functional while still feeling like a surprise when you enter. The floating cabinet provides plenty of storage without feeling heavy.

**Any design tricks of the trade to share?**

People often think dark colors make a room feel smaller, but painting both the walls and ceiling the same dark color actually makes the ceiling feel higher.

**How did you go about selecting accessories?**

When accessorizing a powder room, less is more. These spaces are small and heavily used, so it's important to choose decor that won't be damaged by water or easily knocked over. I also believe in using odd numbers when arranging items or artwork—odds are more visually interesting than evens.

**DETAILS ABOUT THIS DESIGNER**







## Mud Room

■ **TAB INTERIOR DESIGNS**  
tabinteriordesigns.com

■ **DESIGNERS**  
Trish Bonney, Maira Santos

■ TAB Interior Designs transformed the mudroom into a welcoming and functional entry space, emphasizing the importance of first impressions. Often overlooked, the mudroom serves as the gateway into the home, and the design team wanted to make it both memorable and practical. Built-in cabinetry provides ample storage and seating, while thoughtful design choices ensure that the space is as beautiful as it is functional.

### Why did you select this space to design?

A mudroom can sometimes be an afterthought, but it's generally the first place a homeowner enters. It should be both welcoming to enter and memorable to leave, which is why we chose it to design.

### How did you ensure the mudroom is both beautiful and functional?

We added built-in cabinetry for storage, a surface for setting down keys and mail, a place to sit when putting on or taking off shoes, and hooks for hanging coats and bags.

### Any design tricks of the trade to share?

If you're looking for unique textiles, check with local designers or upholstery companies about purchasing leftover fabric scraps. They can be great for creating custom cushions or pillows at a lower cost.

### Any design trends that you especially love right now?

In mudrooms, we're seeing more color and pattern than ever before, which is exciting. Our color palette here is a bit more bold than what's typically expected, and it makes the space really pop.

### Seamless Transition

TAB Interior Designs made a statement in the mudroom with custom cabinetry and seating, while Sherwin Williams' Raging Sea on the accent wall pulls the entire space together with bold, cohesive style.

### DETAILS ABOUT THIS DESIGNER





## Primary Bedroom

■ **HW HOME**  
hwhome.com

■ **DESIGNERS**  
Ron Werner, Christian Rhea

renew retreat that harmonizes with the home's minimalist design and natural surroundings. Anchored by the HW Home Musa king bed—a statement piece featuring rich brown leather and light linen fabric—the space exudes timeless sophistication and organic warmth.

The designers favored a tonal color palette that allows natural materials to shine, layering textures to add depth and visual interest without overwhelming the senses. Large windows offer views of the old-growth evergreens, enhancing the connection between indoor and outdoor spaces. A multilayered lighting plan provides control over ambiance, while thoughtfully selected accessories and ample negative space contribute to a calming atmosphere ideal for rest and relaxation.

### What's a key element that makes your space unique?

Texture. The Musa bed serves as the anchor point, with its rich brown leather and light linen fabric creating a visually striking focal point. The interplay of these materials adds depth and sets the stage for harmonious layering of other design elements.

■ For the 2024 *Denver Life Magazine* Designer Showhouse, HW Home brings their signature “warm modern organic” aesthetic to the primary bedroom, creating a serene

### How did you ensure the primary bedroom is both beautiful and functional?

By embracing clean lines and a neutral color palette, we crafted a calming foundation that allows the bed to take center stage. Each design choice complements the bed without appearing overly matched, focusing on high-quality, natural materials to create a unique and timeless space.

### Any design tricks of the trade to share?

We implemented a multilayered lighting plan

to control ambiance and used ample negative space around the bed for visual rest. Textured elements like throw pillows add interest without overwhelming the neutral palette. Prioritizing natural materials enhances comfort and promotes a healthy environment.

### How do you go about selecting accessories?

We echo materials from the furniture and introduce new textures to add depth. Scale is important to ensure pieces complement the space. Pops of color or patterns can



**Private Sanctuary** HW Home's serene primary bedroom features the stunning Musa bed as its centerpiece, pairing rich brown leather and light linen fabric. The room's soft textures and large windows invite natural light, creating a peaceful, restorative retreat.

come from artwork or rugs, while functionality is considered with items like trays, lamps, and baskets. Personal touches like travel finds or heirlooms help personalize the space.

**DETAILS ABOUT THIS DESIGNER**





**TICKLED PINK** Hoth Interiors brings playful energy to this tween girl's bedroom with bold patterns, pop-culture-inspired elements, and a cozy loft hangout. The room's vaulted ceilings and ample natural light make it both visually captivating and fun.



## Tween Girl's Bedroom with Loft

■ HOTH INTERIORS  
hothinteriors.com

■ DESIGNER  
Jill Weiman

■ Jill Weiman of Hoth Interiors brings her signature style of creating visual stories that keep the eye entertained to this bedroom in the 2024 *Denver Life Magazine* Designer Showhouse. This space, designed for a young teenage girl, marries bold modern elements with childlike warmth. Vaulted ceilings, ample glazing, and a cozy loft hangout make this room both visually captivating and functional. Weiman's attention to detail shines through in the trim work, textures, and layered accessories, creating a polished yet playful space.

### Why did you choose this space to design?

The architecture really drew me in—between the glazing, the vaulted ceiling, and the loft space, this room had the bones for something truly special. Designing for a girl in her young teens also allowed me to highlight playful, pop-culture elements and

modern pop art while maintaining an elevated, sophisticated feel.

### How did you incorporate the builder's aesthetic into your space?

The home has a warm, resort-like vibe with modern elements like large glazing and natural tiles. I wanted to reflect

that by using high-end materials and adding texture through wainscoting and trim profiles. These elements keep the room cohesive with the rest of the home.

### Any design tricks of the trade to share?

Be sensitive to the architecture of the space. Here, I played up the vaulted ceiling and large windows, using those features as a backdrop to introduce bold colors and textures.

### What was the inspiration behind your furniture selection and placement?

Since the walls and textures are the bold background for this space, I chose earthy, resort-like furniture in natural tones to serve as the foreground. The pieces are high-end but have a soft, feminine vibe.

### How do you go about selecting accessories?

Accessories need to tell a story. In this case, I chose items that convey a vibrant and sophisticated personality. Everything from the art and floral arrangements to the fur blankets and jewelry trays adds texture and emphasizes a sense of girlish opulence while remaining photogenic and visually youthful.

### DETAILS ABOUT THIS DESIGNER





## Guest Bedroom

■ **EVERYDAY LOVELY**  
everydaylovelydesign.com

■ **DESIGNERS**  
Chalea Fields, Brandy Hall

■ Chalea Fields and Brandy Hall of Everyday Lovely bring their signature black-and-white contrasting materials and layered textures to the guest bedroom in the 2024 *Denver Life Magazine* Designer Showhouse. Taking full advantage of the space's expansive floor-to-ceiling windows, they've created a serene, naturally lit retreat, blending organic finishes and earth tones to reflect the home's aesthetic.

### **How did you incorporate the builder's aesthetic into the space?**

The design played off the builder's aesthetic through the use of organic and natural finishes, along with contrasting earth tones that complement the rest of the home.

### **What's a key element that makes your space unique?**

The use of texture. From the accessories to the area rug, texture is abundant in this room. Even the ceramic table lamps lend a soft depth to the space.



**How did you ensure the space is both beautiful and functional?**

We made sure there was plenty of additional storage, seating, and ambient lighting to create a soft aesthetic without sacrificing practicality.

**Any design tricks of the trade to share?**

Always have a mix of metal, wood, and glass in your design. It creates balance and ensures the space feels layered and intentional.

**What inspired your furniture selection and placement?**

We were inspired by natural elements. Leather, jute, wood, metal, and boucle fabrics combine to create a space that feels airy, welcoming, and grounded.

**How do you go about selecting accessories?**

Accessories are a great way to add personality and texture to a space. In this room, we chose textural ceramics for greenery to bring a natural, organic touch to complement the room's abundant natural light.

**DETAILS ABOUT THIS DESIGNER**





**CHILD'S PLAY** Custom MT Company headboards bring a lively pattern to the little girl's room, where Beautiful Habitat Interior Design chose two twin beds instead of one—creating the perfect setup for fun sleepover parties.





## Little Girl's Bedroom

■ BEAUTIFUL HABITAT INTERIOR DESIGN  
beautifulhabitat.com

■ DESIGNER  
Tennille Wood

■ Beautiful Habitat Interior Design, known for its commitment to creating spaces that cater to both beauty and function, approached the secondary bedroom of the 2024 *Denver Life Magazine* Designer Showhouse with a playful yet sophisticated touch. The room's unique angled walls and floor-to-ceiling corner windows provided ample inspiration, allowing Tennille Wood to design a space that stands out from the rest of the home. Custom furniture, bold patterns, and thoughtful color combinations lend this bedroom a fun, youthful energy.

### Why did you select this space to design?

I was inspired by the funky shape of this room, with the angled wall and floor-to-ceiling corner windows. It's a unique room, and it's generously sized for a secondary suite.

### How did you incorporate the builder's aesthetic in this bedroom?

We continued the overall paint color on the neutral walls of this room, but since we believe this is a kid's space, it's free to stand alone. It doesn't need to coordinate with the adult spaces of the home.

### How did you ensure this bedroom is both beautiful and functional?

Although "beautiful" is part of our name, we focus heavily on function. A room must work before its beauty can be fully appreciated. Two twin beds fit this space better than one large bed, and they also create a perfect sleepover opportunity for a 10-year-old girl and her friends.

We also custom-designed a small sofa to fit into the nook created by the angled wall.

### What's a key element that makes your space unique?

We have a unique way of blending colors and patterns in every room we design. The result is bold, yet balanced. In this room, we added a primary pattern to the headboards, paired with painted stripes on the walls.

### What trends are you especially loving right now?

So often, you'll see neutral-colored headboards with more color in the bedding. I'm loving the trend of bold designs in the headboards themselves, just like we've done here.

### DETAILS ABOUT THIS DESIGNER





## Laundry & Landing

■ **FORREST AMES**  
forrestameslifestyle.com

■ **DESIGNER**  
Merritt Grothe

■ Known for her signature blend of elements and patterns, Merritt Grothe brings her cohesive yet playful style to often-overlooked areas like the laundry room and hallway landing. With neutral tones and subtle pops of color, the design is fresh and versatile, ensuring these functional spaces feel stylish and inviting. Accessories finish off the space without detracting from the overall aesthetic.



**Why did you select these spaces to design?**

Hallways and laundry rooms are often overlooked, but I believe these functional spaces can still be fun. Freshening them up creates an opportunity to utilize areas of the home in a beautiful way.

**What's a key element that makes your space unique?**

Mixing patterns and layering textiles to make a statement. It's a subtle yet powerful way to elevate a space without overwhelming it.

**Any design tricks of the trade to share?**

Powder rooms, accent walls, and laundry rooms are great places to let your personality shine through in small doses.

Start with an element you love—a wallpaper, piece of furniture, or art—and work backward from there. And if you're nervous about adding color, you rarely can go wrong with blue.

**What inspired your furniture selection and placement?**

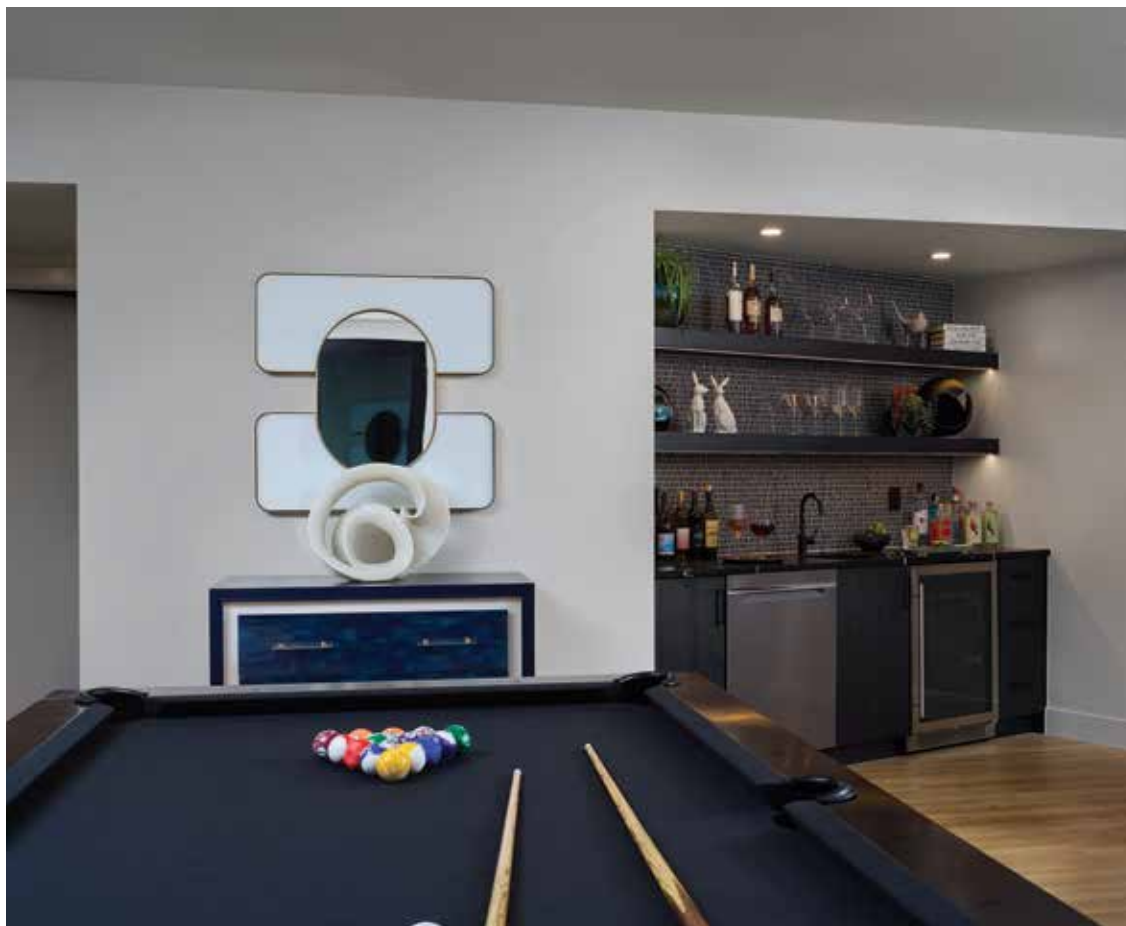
Spontaneity, practicality, and fun.

**What design trends are you especially loving right now?**

I'm really into neutral spaces that surprise you with pops of color, especially on the floor. Green cabinetry is having a moment too. And in kitchens, I'm loving working pantries and keeping countertops decluttered for a sleek, clean look.

**DETAILS ABOUT THIS DESIGNER**





**FUN AND GAMES** The Felix Pool Table by Plank & Hide in a beautiful gun metal finish is bold and versatile with a unique four-star leg base.

## Lower Level Rec Room

■ **HOWARD LORTON FURNITURE & DESIGN**  
howardlorton.com

■ **DESIGNER**  
Rob Osgard

■ In the lower level rec room, Rob Osgard of Howard Lorton Furniture & Design strikes a balance between casual comfort and modern style. Drawing from the home's unique architectural angles, Osgard uses deep, rich tones and layered textures to create a space that feels welcoming and visually engaging. The deep blue-green wall adds depth, while the mix of textures—from the sectional to the unusual bookcases—creates a relaxed yet polished feel. With a focus on both form and function, this room invites family and friends to gather and unwind in style.

### **Why did you select this space to design?**

I liked the openness and the casual nature the family room space provides. It felt like the perfect area for gathering and relaxing.

### **How did you incorporate the builder's aesthetic into your space?**

The architecture has unusual angles and shades, so I used color and furniture placement to bring

dimension and depth to the room, playing off those unique features.

### **What's a key element that makes your space unique?**

The deep blue-green wall, paired with the unusual bookcases, contrasts beautifully with the textures of the sectional and





chairs. It adds a sense of depth and interest.

**Any design tricks of the trade to share?**

Always establish a focal point, then guide the eye across the room from that point—much like an artist creates a central focus and lets the eye explore other

elements from there.

**What in your space reflects your signature?**

I love using deep, rich tones and mixing metal finishes. It makes the space feel more comfortable and approachable while also adding sophistication.

**How do you go about selecting accessories?**

Texture, scale, and finishes are essential. I work with rugs, furniture, and artwork to ensure the space feels balanced and cohesive.

**What design trends are you especially loving right now?**

I'm excited about the return of curves and more traditional furniture, but with a twist—more color, more character, and mixed with contemporary, transitional styles. It's refreshing to see something other than gray dominating the market.

**DETAILS ABOUT THIS DESIGNER**





**DETAILS ABOUT THIS  
DESIGNER**



## Gym

■ **TAB INTERIOR  
DESIGNS**  
tabinteriordesigns.  
com

■ **DESIGNERS**  
Trish Bonney,  
Maira Snatos

■ In the home gym, TAB Interior Designs took a minimalist yet functional approach, maintaining the modern aesthetic of the house while adding personality through carefully selected artwork and furnishings. The design team focused on creating a space that not only serves its purpose but also feels inviting. Adaptable storage solutions ensure that the gym can evolve with the homeowner's needs, while a clean, uncluttered design makes it a space anyone would want to frequent.

**How did you incorporate the builder's aesthetic into the gym?**

The architecture of the home is quite modern, so we kept the design simple and straightforward to align with that aesthetic.

**What's a key element that makes your space unique?**

We took advantage of the higher ceilings in parts of the room to create a fun design moment with [artwork and lighting that adds visual interest.]

**How did you ensure the gym is both beautiful and functional?**

We opted for storage furniture instead of built-ins, allowing the room to adapt as needs change over time. Everything we chose had to be simple and functional for an easy user experience.

**Any design tricks of the trade to share?**

Storage furniture for a gym doesn't have to be a big investment. Items like towels, water bottles, and yoga mats can be stored in cost-effective pieces, so the real investment should be in quality exercise equipment.

**What trends in home gym design are you especially loving right now?**

Simplicity in design with a few fun touches that make the gym a place you enjoy being. It's important that a home gym feels inviting and motivating.

## Outdoor Patio Spaces

■ HOWARD LORTON  
FURNITURE  
& DESIGN  
howardlorton.com

■ DESIGNERS  
Valerie O'Dowd,  
Sandra Ozolinsh

■ For the outdoor patio spaces, Howard Lorton Furniture & Design sought to create an inviting environment that seamlessly connects the home's modern architecture with soft, comfortable elements for lounging. The use of simple colors like gray, taupe, and beige, along with the introduction of ropes and woven textures, adds both calm and excitement to the space, which is designed to reflect the beauty of the home's brick and steel exterior while also providing a relaxing outdoor retreat with beautiful views of the corner lot in Bonnie Brae.

### Why did you select this space to design?

We wanted to showcase the exterior brick and black steel with modern, soft elements that provide lounge seating for family and friends to enjoy the greenery and views of this spectacular corner lot in Bonnie Brae.

*continued on p. 116*



**INSIDE OUT** The spacious home features a variety of distinct patios with ample room for dining (*above*), lounging (*p. 116, top*), and cooling off after a workout in the gym on the lower level (*p. 116, bottom*).



**What's a key element that makes your space unique?**

The clean, elegant look of carved wood motifs combined with extruded aluminum furniture adds a unique, sophisticated touch.

**How did you ensure your space is both beautiful and functional?**

We chose seating that complements the architecture and makes the outdoor space feel welcoming and comfortable.

**Any design tricks of the trade to share?**

Less is more when it

comes to outdoor spaces. Adding a rug creates a cozy, defined area for lounging.

**What inspired your furniture selection and placement?**

We focused on conversational groupings that bring people together. A firepit adds warmth and makes the space feel more intimate.

**What outdoor design trends do you especially love right now?**

Vibrant colors are making a comeback, which is exciting, and we're loving the use of heavy textures

mixed with natural fabrics like linen and cotton. It's also refreshing to see family furniture pieces being mixed with new, clean traditional shapes and patterns.

**DETAILS ABOUT THIS DESIGNER**







## Garage

■ The corner lot in the Bonnie Brae neighborhood provides access to a generous connected three-bay garage with built-in storage and finished flooring. Chad Karst of Garage Guru coated the garage floor with polyaspartic for maximum protection and installed an adjustable-height workbench and an Onrax overhead storage rack. It's the perfect showroom for this 2022 Ferrari 296 GTB, Twin Turbo 3.0L V-6 Engine PHEV, 830 HP Total Combined Output, plus two others as rare as a three-car garage in the area. Available for \$419,000 at Ferrari of Denver, 1480 E. County Line Road, Highlands Ranch, ferrariofdenver.com



## Art Spotlight

The artwork in the 2024 *Denver Life Magazine* Designer Showhouse is curated by Gallery 1261, Abend Gallery, and Ann Benson Reidy + Associates. *by Stephanie Wilson*

### Gallery 1261

● Celebrating its 20th anniversary, Gallery 1261 remains a premier space for contemporary fine art in Denver. Established in 2004 with a commitment to showcasing pure artistic expression, the gallery offers a platform where artists can exhibit their work free from marketing constraints. Curated by Quang Ho, Gallery 1261 focuses on the integrity of the creative process, embracing art that speaks to the soul. Two standout works on display in the Designer Showhouse, *Spoon* and *Fork* by Gregory Block, exemplify the gallery's dedication to exceptional artistry. These intricate oil-on-panel pieces, each 9 x 4 inches, blur the lines between everyday objects and fine art, capturing both the precision of the medium and the beauty in the mundane. Upcoming exhibitions include Quang Ho's solo show, running October 25 through November 12, followed by *Bad Ass Women of the West*, a curated collection by guest curator Rose Fredrick, opening November 21.

1261 Delaware St., Ste. 1  
gallery1261.com

### Ann Benson Reidy + Associates

● Founded by Ann Benson Reidy in April 2011, ABR + Associates transforms the experience of buying art through a personalized, relationship-driven approach. Unlike traditional galleries, ABR + Associates does not represent a fixed roster of artists, allowing the firm to source from a wide network of talent both regionally and internationally. This freedom allows them to tailor each collection to fit the client's specific vision and space. For the Designer Showhouse, ABR + Associates, including senior art advisor Jinous Azghandi, worked closely with design teams to select art that enhances each room's aesthetic.

One of the featured pieces is *Pink Aspen: Garden of Eden* by Colorado artist Trine Bumiller. This work, part of her "Garden of Eden" series, was originally painted for an exhibition at Denver's historic Emmanuel Gallery. Known for her deft layering of luminous oil paints, Bumiller merges nature with abstraction, using radiant hues to evoke an emotional and personal connection to the environment.

424 N. Broadway, Ste. 200  
annbensonreidy.com

### Abend Gallery

● A staple in Denver's art scene since 1990, Abend Gallery specializes in showcasing a diverse array of emerging and established artists from around the world. Known for its thoughtfully curated collections, the gallery emphasizes art that inspires and engages, complementing the interiors it inhabits. One such piece featured in the Designer Showhouse is *Quill* by Canadian artist Drew Young. This captivating 48 x 48 acrylic and oil painting evokes a sense of movement and transformation through its vibrant palette and fragmented floral design. Abend Gallery collaborated closely with the design teams to select artwork that perfectly complements the aesthetic of each room. In addition to contemporary works like Adam Hall's *White Noise* and Ed Fairburn's map-based portraits, Abend hosts its annual Holiday Miniatures Show from December 5 through December 28. The event will showcase small-scale masterpieces perfect for any collection.

1261 Delaware St., Ste. 2  
abendgallery.com

# Showhouse Resources 2024

All products, pricing, and details have been provided for informational purposes only. If you are interested in any of the items listed or pictured in the room or spaces, please contact the interior designer directly.

## KITCHEN, BREAKFAST NOOK & PANTRY (C2DESIGN)

**Eating Nook Table:** Rio Spanish, black marble top with a tulip base, \$3,490; **Liz Counter Stools:** taupe leather and metal frame, \$795 each, both HW Home. **Eating Nook Club Chairs:** linen slipover club-style chair, Four Hands, \$699 each. **Drapery:** Pottery Barn, \$120 per panel. **Pantry Roman Shade:** linen unlined, Select Blinds, \$350. **Pantry Wallpaper:** La Broderie, beige, York, \$180/double roll. **Island Lights:** Galassia two light linear chandelier, Visual Comfort, \$339; **Nook Pendant:** black, ET2, \$568, both Fusion Light and Design. **Modern Tibetan Rug:** India, \$1,000, Shaver-Ramsey. **Oven and Range Top:** stainless steel, \$14,299; **Refrigerator:** panel-ready, \$7,999; **Freezer:** panel-ready, \$7,999; **Dishwasher:** panel-ready, \$1,399; **Microwave:** stainless steel, \$2,199, all by Thermador, from Ferguson. **Hood:** stainless steel, Vent-A-Hood, \$2,605; **Faucet:** brilliance stainless, Brizo, \$530, both Ferguson. **Artwork:** *Long View*, 2021, by Judd Mercer, oil, \$1,500; *This Way to the Mountain*, 2023, by Mo Myra, varnishes watercolor on paper, \$900, both Abend Gallery. *Fork*, 2020; *Spoon*, 2020, both by Gregory Block, oil on panel, Gallery 1261.

## DINING ROOM & WET BAR (LUSI DESIGN)

**Truxton Floor Lamp:** Arteriors, \$2,265; **Maya Oval Dining Table:** tarcea, \$5,680; **Barritz Dining Chair:** noir, oak leg, \$795 each; **Schefflera Tree—Black Pot:** \$1,250, all HW Home. **Wine racks:** W Series Matte Black, VintageView, \$236 each. **Wine:** 2021 Cabernet Franc Horse Haven Hills; 2020 Red Blend Horse Haven Hills; 2022 Rosé Grand Valley; Blanc CO White Blend, all Carboy Winery. **Wallpaper:** Nostalgia Wallpaper, custom mural, Lemon Papier, Walltawk, price upon request. **Wall sconce:** matte black, Crystorama, Fusion Light

**STYLISH STORAGE** The Primary Bedroom, designed by HW Home, showcases the Emil 2-Drawer Side Table—an elegant bedside piece that doubles as a stylish display for books and memorabilia.



# SHOWHOUSE RESOURCES 2024

and Design, \$150. **Beverage Center:** stainless steel, Zephyr, \$1,199; **Faucet:** brilliance stainless, Brizo, \$327, both Ferguson. **Artwork:** *Pop & Society*, \$545; *Desert House Party*, orange, \$545; both by Slim Aarons, HW Home.

## LIVING ROOM (KIM LAYNE INTERIORS)

**Cassis III Sofa:** wheat fabric, \$6,990; **Campaign Lounge Chair:** dune/shearing finish, \$3,450; **Nodo Cocktail Table:** Ochre Guanacaste, \$3,350, all HW Home. **Planter:** Terracotta, Birdsall & Co., \$450 each; **Chandelier:** matte black, Tech, \$1,998; **Wall Sconce:** black, House of Troy, \$226, both Fusion Light and Design. **Moroccan Rug:** Afghanistan, \$7,400; **Antalya Navajo Rug:** Turkey, \$1,050, both Shaver-Ramsey. **Artwork:** *Crossing* by Aaron Li-Hill, aerosol and acrylic, \$5,000; *Denver II (50/50)*, 2019, \$444; *Denver I (7/50)*, 2022, \$655; *Colorado Geological (18/50)*, 2023, \$755; all by Ed Fairburn, cotton rag premium Moab paper, Abend gallery.

## PIANO LOUNGE (TRUDESIGN)

**Piano:** Yamaha Disklavier GB1K ENST, reproducing grand piano, Classic Pianos, \$25,499. **Nuage Left Chaise:** \$4,950; Modena Classic Swivel Chair: \$3,650; **Sarsa Floor Lamp:** ebony teak, \$2,225; **Cara End Table:** dark mushroom, \$1,960; **Jan Bunching Cocktail Tables:** \$3,350, all HW Home. **Nostalgia Wallpaper:** Buttercream, Lemon Papier, Walltawk, \$964. **Wall Sconce:** bronze, Troy, Fusion Light and Design, \$300. **Rug:** Deconstruction, Pakistan, \$9,200, Shaver-Ramsey. **Artwork:** *Ritual 9*, 2023, by Aiden Kringen, oil acrylic silver leaf on canvas, Abend Gallery, \$20,000.

## OFFICE (ATELIER INTERIOR DESIGN)

**Kadon Chaise Lounge:** camel shearling upholstery and almond parawood legs, Four Hands, \$1,699. **Finnley Writing Desk:** mocha finish, Arhaus, \$2,799. **Savitri Bone Velvet Office Chair:** iron tube frame with polished nickel finish, CB2, \$699. **Snake Party 2.0 Wallpaper:** Tranquil, Merenda Wallpaper, \$360. **Paint Color:** Palm Leaf in semi-gloss, \$89; **Ceiling Paint Color:** Cold Foam, \$89, both Sherwin Williams. **Floor Lamp:** silver nickel tubular base and molded plastic ivory shade



**PERFECTLY POSITIONED** Just off the dining room, this chic wet bar combines style with convenient access for entertaining.

\$1,699; **Table Lamp:** tubular steel, \$600, both vintage. **Mamluk Rug:** Afghanistan, \$3,450, Shaver-Ramsey. **Bookshelf Artwork:** *Cymbidium Orchids II*, 2020, oil on aluminum, \$1,100; *Cymbidium Orchids*, 2020, \$820, both by Narelle Zeller, oil on aluminum, Abend Gallery. **Artwork:** *Quill* by Drew Young, acrylic and oil; *White Noise* by Adam Hall, both price upon request, Abend Gallery.

## POWDER BATHROOM (RED CHAIR DESIGN)

**Ersari Rug:** Afghan, \$1,000, Shaver-Ramsey. **Wall Sconce:** matte black, Tech, Fusion Light and Design, \$348. **Faucet:** luxe gold, Brizo, Ferguson, \$590. **Artwork:** *Absence/No Presences*, 2019, india ink, graphite, acrylics, colored pencil, mylar, resin on panel, \$5,200; *Reclaimed Tipping Tower*, 2010, graphite, tape, resin, mylar on panel, \$2,800; *Fire at the Mountain*, 2018, graphite, ink, oil pastel resin on panel, \$1,800; all by Brooks Salzwedel, Abend Gallery.

## PRIMARY BEDROOM & BATH (HW HOME)

**Lucien Swivel Chair & Ottoman:** Berber birch fabric, \$5,850; **Musa King Bed:** oatmeal fabric and caramel leather, \$5,485; **King GB Standing Foundation:** \$490; **Greggs Drink Table:** Interlude, \$1,050; **Emil 2-Drawer Side Table:** Burl, \$2,150 each;

## RhineBeck Console Table:

\$3,650; **Bugatti Mirror:** brass, Un-Crate, Inc., \$1,550; **Desert Palm in Cement Planter:** \$1,265; **Shape Floor Lamp:** walnut, \$2,950; **Kelsea 4 Door Cabinet:** \$4,350; **Atlantic Floor Lamp:** bronze metal, \$1,195; **Triple Agapanthus:** \$1,750; **BR Silver Plush Firm King Mattress:** \$1,577, all HW Home. **Aryana Gerus Rug:** Afghanistan, \$10,500, Shaver-Ramsey. **Chandelier:** soft black, Mitzi, \$638; **Bathroom Wall Sconce:** warm bronze, Alora, \$282; **Bathroom Pendant Light:** black, ET2, \$598; all Fusion Light and Design. **Bathroom Faucet:** luxe nickel, \$535; **Floor Mounted Tub Filler:** luxe nickel, \$2,149; **Multi-Function Hand Shower Package:** luxe nickel, \$635; **Rain Shower Head:** luxe nickel, \$488; **Ceiling Mounted Shower Arm:** luxe nickel, \$137; all by Brizo, Ferguson. **Artwork:** *Floating Leaves in Chocolate 3*, \$1,995; *Floating Leaves in Chocolate 4*, \$1,995; *Zen III - Green*, by Soicher Marin, \$675; *Stacked Wall Ring:* Phillips Collective, \$665, all HW Home. *Specter*, 2021 by Shelli Langdale, oil on gallery canvas, Abend Gallery, \$25,530.

## LITTLE GIRL'S BEDROOM (BEAUTIFUL HABITAT INTERIOR DESIGN)

**Headboards:** custom, \$1,620 each; **Sofa:** custom, \$5,595; **Nightstand:** upholstered table in natural cork, \$1,941; all by MT

Company from Beautiful Habitat. **Headboard Fabric:** Cala Marsal, Verde Burdeos, Kravet, \$1,496 each. **Doctor's Choice Euro Top Mattress:** twin, Denver Mattress Co., \$740 each. **Paint:** Moss Rose, Fabulous Grape, Delightful, all Sherwin Williams. **Lamp:** Mitzi, Highlands Design Resource, \$350. **Set of Concrete Tables:** Curated by Paul Interiors, \$350. **Wall Mirror 30":** \$880; **Wall Mirror 18":** \$325, both Submaterial. **Pendant Light:** matte black, Dainolite, \$476; **Bathroom Wall Sconce:** midnight black, Generation, \$219, both Fusion Light and Design. **Faucet:** brilliance stainless, \$334; **Shower Head:** brilliance stainless, \$173; both by Delta from Ferguson. **Artwork:** *Clustered Reflections* (Magenta and Orange) by Taiko Chandler, \$1,750 each; *Pink Aspen: Garden of Eden* by Trine Bumiller, oil on panel, round, \$1,900; *Indigo Lens* by Alyson Khan, acrylic on panel, \$3,000; all Ann Benson Reidy + Associates.

## TWEEN GIRL'S BEDROOM (HOTH INTERIORS)

**Bruno Floor Lamp:** \$1,195; **Log Side Table:** white, \$1,250; **Hand-Loomed Ottoman:** \$480; **Othello Queen Post Bed:** \$4,450; **Ashland Chair:** Mongolia fur, \$1,995, all HW Home. **Doctor's Choice Elite Euro Top:** queen, Denver Mattress Co., \$1,500. **Chandelier:** black, Lark, \$300; **Bathroom Wall**

# SHOWHOUSE RESOURCES 2024



**OPPOSITES ATTRACT** Artwork by Brooks Salzwedel add contrasting colors to the powder bath, designed by Red Chair, while keeping the moody same tone.

**Sconce:** midnight black, Generation, \$219, all Fusion Light and Design. **Moroccan Rug:** India, \$2,900, Shaver-Ramsey. **Faucet:** \$334; **Shower Head:** \$173, both by Delta in brilliance stainless from Ferguson. **Artwork:** *Cuan-do Bailamos II (When We Dance II)* by Ana Maria Hernando, tulle, wire, wood, felt, \$12,000; *Double Arrow* by Alyson Khan, acrylic on canvas, \$18,000, both Ann Benson Reidy + Associates.

## GUEST BEDROOM (EVERYDAY LOVELY)

**Rosedale King Bed:** yucca oak, \$2,850; **Lucera Medium Table Lamp:** \$995, all HW Home. **Telluride Mattress:** king, Denver Mattress Co., \$2,200. **Paint:** City Loft, Sherwin Williams. **Chandelier:** midnight black, Generation, \$399; **Bathroom Wall Sconce:** midnight black, Generation, \$219; both Fusion Light and Design. **Tibetan Rug:** Nepal, \$6,500, Shaver-Ramsey. **Custom Flat Roman Shade:** \$985; Custom Ripplefold Show Curtain \$655, both nomad in rust, Schumacher, Windows Dressed Up. **Faucet:** matte black, \$400; **Shower Head:** dual-function pressure balanced valve, matte black, \$343; both by Delta from Ferguson. **Artwork:** *Black and White Abstract Inverted*, \$1,100; *Black*

*and White Abstract 3 I*, \$1,295; *Jenga Series:* large, \$1,650; all HW Home. **Sculpture:** black/aluminum and iron, CB2, \$149.

**LOWER LEVEL BEDROOM**  
**Ceiling Light:** natural aged brass, Maxim, Fusion Light and Design, \$258.

**LAUNDRY ROOM (FORREST AMES)**  
**Wallcoverings:** Stockholm Chevron Grasscloth, Thibaut, Egg and Dart, \$320/roll. **Paint:** Brush Blue, Benjamin Moore, Guiry's. **Faucet:** matte black, Signature Hardware, Ferguson \$278. **Front Load Perfect Steam Washer with LuxCare Plus Wash:** \$1,149; **Front Load Perfect Steam Electric Dryer with Predictive Dry and Instant Refresh:** \$1,149, both Electrolux.

**LANDING (FORREST AMES)**  
**Chair Duo:** custom upholstered, Thibaut, Egg and Dart, \$1,500 each. **Side Table:** Aluminum Drum, Ballard Designs, Online, \$300. **Barcelona Credenza:** embossed, reclaimed teak gilded in German silver, Contemporary & Glamorous, HW Home, \$8,990. **White Lacquer Desk:** West Elm, \$800. **Linden Lamp:** white ceramic lamp, Visual Comfort, \$799 each. **Wallcoverings:** mizu

stripe in taupe, Thibaut, Egg and Dart, \$94/yard. **Artwork:** *Small Plywood Rope I and II* by Caprice Pierucci, pine and plywood pair, \$5,800; *#3*, 2016, by Ren Cannon, watercolor, oil pastel, gesso on wood panel, \$3,000; *Reveal 528—Grounded White* by Chris Richter, oil on canvas over panel, \$9,500; all Ann Benson Reidy + Associates.

## GYM (TAB INTERIOR DESIGNS)

**Inspire IC2.2 Indoor Cycle:** spin bike, \$1,299; **Inspire Vert Dumbbell Rack:** weights and rack, \$843; **Inspire Folding Bench:** adjustable \$299; all from Push Pedal Pull. **Shelf Cubbies:** black-brown, Kallax, Ikea, \$80. **Artwork:** blue swirl \$100; skier: \$100; '80s-Inspired Snowboards, \$175; all handmade by TAB Interiors.

## MUDROOM (TAB INTERIOR DESIGNS)

**Mirror:** \$99; **Retro Phone:** \$35; **Decorative Quote Books:** \$95, all Tab Interiors. **Paint Color:** Raging Sea, Sherwin Williams. **Tibetan Rug:** Nepal, \$4,900, Shaver-Ramsey. **Artwork:** *Foggy Forest*, photography on canvas, Tab Interiors, \$250.

## LOWER LEVEL REC ROOM (HOWARD LORTON FURNITURE & DESIGN)

**Felix Pooltable:** 8 feet, Plank and Height, Fodor Billiards and Barstool, \$6,999. **Sectional:** Century Furniture, \$15,435; **TV Console:** Barclay Butera Park City Stein Buffet, Lexington, \$3,390; **Taylor King Earth Swivel Chairs:** \$2,999 each; **Taylor King Memo Chairs:** Taos amber class IV Leather, \$3,400 each; **Navis Accent Table:** Sagebrook Home \$335; **Canton End Table:** maple wood/tobacco finish, Chaddock, \$1,795; **Coral Sculpture:** Gold Leaf Designs, \$385, all Howard Lorton. **Seville Collection Rug:** India, \$10,500, Shaver-Ramsey. **Dishwasher:** fingerprint-resistant stainless steel, Whirlpool, \$940; **Beverage Center:** stainless steel, Zephyr, \$999; **Faucet:** matte black, Delta, \$342, all Ferguson.

## OUTDOOR LIVING SPACES (HOWARD LORTON FURNITURE & DESIGN)

**ENTRY:** *Fairview Loveseat:* Lloyd Flanders, \$1,299; **Nature's Wood Natural Coffee**

**End Table:** 3 legged, Castelle \$2,010; **Matrix Ignitor Firepit:** Tropitone, \$3,799; **H Collection Lounge Chairs:** Brown Jordan, \$3,370 each; **Outdoor Rug:** Karastan, \$165, all Howard Lorton. **KITCHEN PATIO: Santa Cruz Outdoor Arm Chair:** 4 chairs gray, rope, Bernhardt, \$1,910 each; **Lounge Chairs:** Brown Jordan \$3,570 each; **Delmar Outdoor Dining Table:** Bernhardt, \$2,110; **Riviera Outdoor Rug:** round, Oriental Weavers, \$19, all Howard Lorton. **LOWER PATIO: Moto Left Arm Day Bed:** sectional, Brown Jordan, \$8,199; **Outdoor Rug:** gray, Loloi, \$158; **Fire Pit Table:** Brown Jordan, \$2,659, all Howard Lorton. **BASEMENT PATIO: Outdoor Rug:** coral/teal, Karastan, \$165; **Coast Teak Easy Chair:** Summer Classics, \$1,399 each; **Loop Side Table:** Gloster Furniture, \$499; **Outdoor Wall Decor:** Gray Canvas, Bad Dog Editions, \$359, all Howard Lorton. **Wall Sconce:** black, Wac, Fusion Light and Design, \$189.

## STAIRS

**Wall Sconce:** black, Kichler, \$330; **Chandelier:** black, Kuzco, \$1,230, both Fusion Light and Design.

**BASEMENT BATHROOM**  
**Bathroom Faucet:** lumicoat stainless, \$634; **Shower System:** brilliance stainless, \$1,649; both by Delta from Ferguson. **Bathroom Wall Sconce:** satin brass, Generation, Fusion Light and Design, \$219.

## ENTRY

**Marella Bench:** 55" hair on hide bench, Sagebrook Home, Howard Lorton, \$899; **Aryana Rug:** Afghanistan, \$3,800, Shaver-Ramsey. **Artwork:** *Morning Diffusion*, 2023, by David Grossman, oil on linen paper, Gallery 1261, \$8,900.

## GARAGE

**Ferrari:** 296 GTB, extra campionato, 2022, Ferrari of Denver, \$435,092. **High Gear Panel:** slatwall on back wall; **GearLoft Shelves:** on slatwall; **Workbench:** adjustable, maple top; **Jumbo GearBoxes:** on each side of bench; **Wall GearBoxes:** above bench; **5-Drawer Modular GearDrawer:** under bench; **2-Door Modular GearBox:** under bench; **Flooring:** Polyaspartic concrete coating, Quicksilver, all Garage Gurus.



# Showhouse Vendors 2024

## ARBORIST

**Colorado Tree & Lawn Specialists**  
303.727.9009  
coloradotreespecialists.com

## ARCHITECT

**Affect Architecture**  
3459 Ringsby Court, Unit 406  
info@affectarchitecture.com

## BRICK WORK

**DH Construction & Design**  
dhcdenver.com

## BUILDER

**Caliber Construction**  
1925 E. Kentucky Ave.  
303.434.1878  
caliber.co

## CABINETS

**Tharp Custom Cabinetry**  
380 W. 37th St., Loveland  
tharpcabinets.com

## CARPENTRY

**JD Brown Builders**  
303.842.0559  
jdbrownbuilders@gmail.com

## CLEANING

**Got it Maid**  
720.338.0462

## DEMO

**Mendoza Demolition Service**  
701 W. 64th Ave., Unit B  
303.427.1201

## DRYWALL

**AM3 Construction**  
720.327.2728  
am3construction@hotmail.com

## ELECTRICIANS

**Vertical Electric**  
303.598.3491

## ENGINEER

**Barton Consulting**  
303.748.3804  
info@bartonconsulting.co

## FENCE

**No Hassle Fence**  
303.368.9472, nohasslefence.com

## FLATWORK

**M2 Concrete and Excavation**  
970.379.6648  
info@m2concrete.com

## FRAMING

**Tigre Corp**  
303.799.9200  
tigrecorp@aol.com

## HARDWOOD FLOORS

**Arrigoni Woods**  
970.479.1800  
arrigoniwoods.com

## INTERIOR AND EXTERIOR PAINTING

**Colorado Quality Painting**  
720.297.9617  
coloradoqualitypainting.com

## LANDSCAPING

**Sky View Landscaping**  
303.994.0579

LIGHTING FIXTURES  
**Fusion Light and Design**  
124 Yuma St.  
303.426.8225  
fusionlightanddesign.com

LIVING ROOM FIREPLACE AND DOOR  
HARDWARE AND BATH ACCESSORIES  
**Rio Grande Co.**  
3990 Havana St.  
303.375.0913, riograndeco.com

LOW VOLT  
**JAVO Solutions**  
720.207.7789  
josh@javosolutions.com

LUMBER  
**Alpine Lumber**  
5800 N. Pecos St.  
303.458.8733, alpinelumber.com

METAL FABRICATION  
**Rick's Iron Works**  
720.225.7048

PLUMBING  
**Plumb On**  
303.564.7240

PLUMBING FIXTURES AND  
APPLIANCES  
**Ferguson**  
1880 W. Oxford Ave., Englewood  
303.739.8000  
ferguson.com

ROOFING, GUTTERS, AND METAL  
SIDING  
**B&L Roofing**  
9500 W. 14th Ave., Lakewood  
303.985.8536, bandroofinginc.com


SHOWER GLASS  
**Barron Glass**  
700 W. Mississippi Ave., Unit B4,  
720.560.4806, info@baronglass.com

STAIRS AND RAILING  
**Masterpiece Stair**  
2250 S. Jason St.  
303.922.5700, masterpiecestair.net

TILE WORK, CARPET, AND  
COUNTERTOPS  
**Kitchen & Floor Concepts**  
4885 S. Broadway  
303.594.1706,  
kitchenandconcepts.houzzsite.com

WALLPAPER INSTALLER  
**Cool Beans Designs**  
720.219.2507  
nancy@coolbeansdesignllc.com

WATERPROOFING  
**Saucedo Drains & Waterproofing**  
Claudio Saucedo  
303.427.8870



Enjoy one of the best places to  
spend an hour in Denver.

Explore immersive art and stunning architecture during a museum experience that won't take up your entire day. Get creative in a hands-on art creation studio and attend events for all ages.

**CLYFFORD STILL | MUSEUM** [clyffordstillmuseum.org](http://clyffordstillmuseum.org)

Photo by Brent Andeck



### The Designer Showhouse Issue!

Colorado's ultimate home and outdoor spaces design resource, offering readers fresh insights from premier architects, designers, landscape studios, artisans, real estate professionals, and more.

Home & Garden  
**COLORADO**

Subscribe at [hgcomag.com](http://hgcomag.com) or get your digital copy at [zinio.com](http://zinio.com)  
Or, pick up at select King Soopers, Safeway, Tattered Cover  
or Barnes & Noble locations.